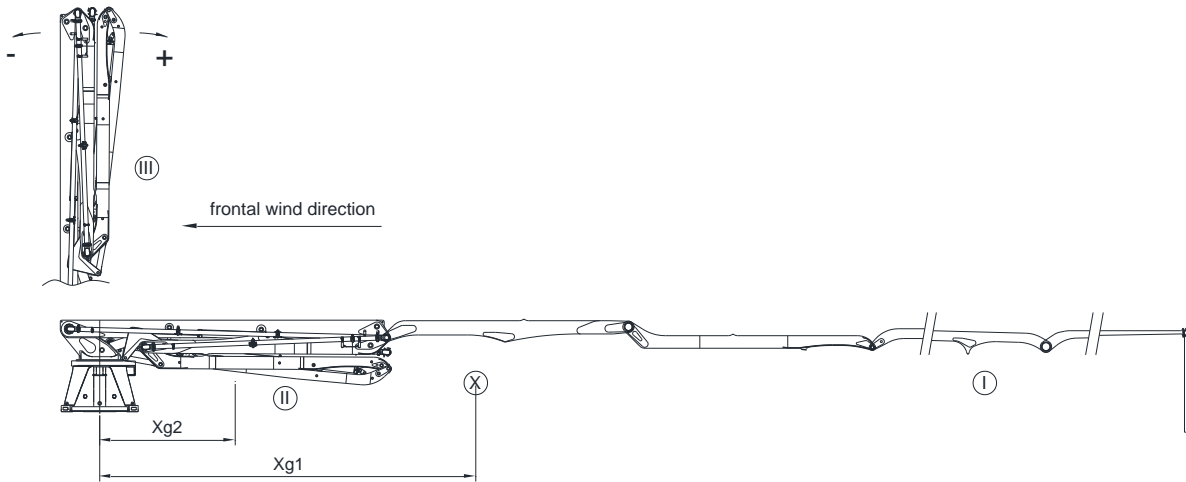


KB-M42RZ_ Placing Boom System Technical data



| MOMENT [kNm] | |
|-----------------------------------|-----------------------|
| Position of boom | Moment(boom side) → + |
| I with concrete in pipe-line | → 1416 kNm |
| II without concrete in pipe-line | → 464 kNm |
| III without concrete in pipe-line | → -33.5 kNm |

| TORQUE MOMENT [kNm] | | | |
|---------------------|------------|------------------|------------|
| In operation | 312.76 kNm | Out of operation | 177.44 kNm |

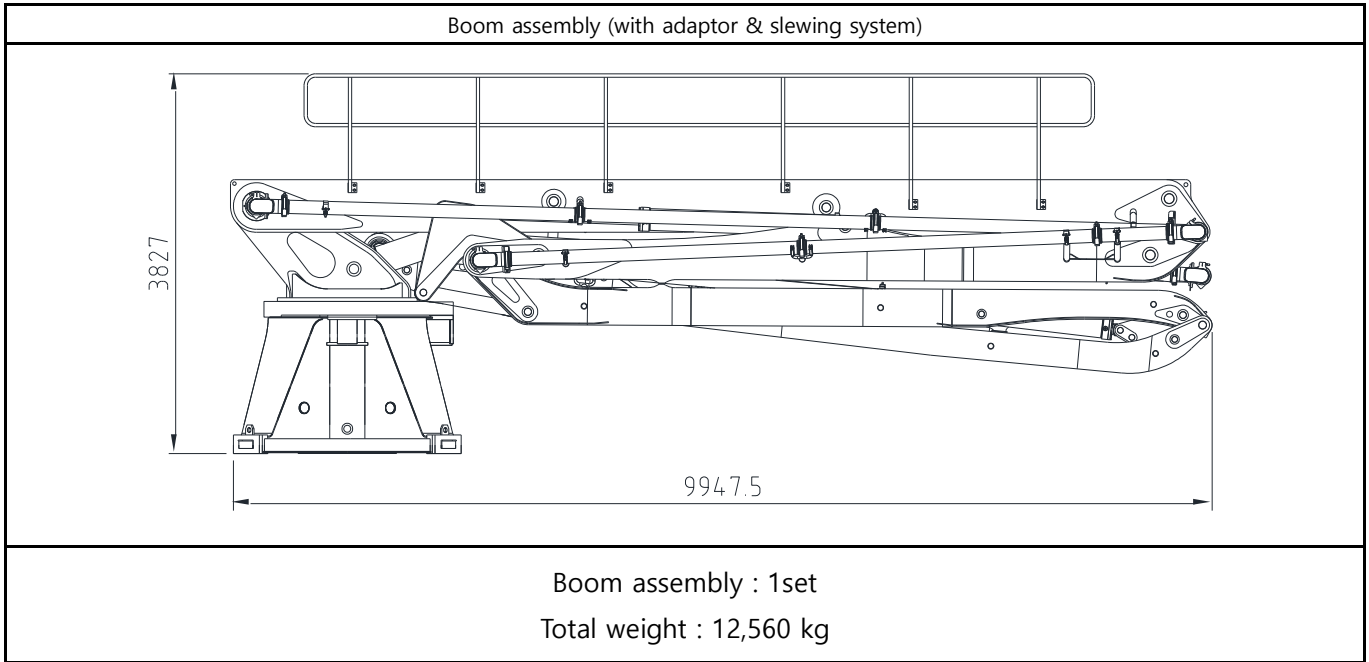
| Total weight [kg]– boom, table, base(with oil), motor, pump, (+concrete) | | | |
|--|-----------|------------------|-----------|
| In operation | 13,750 kg | Out of operation | 12,560 kg |

| Wind-exposed areas [m ²] | | | |
|---------------------------------------|-------------------------------|----------------------------|--|
| Position of boom | Wind-exposed area | Center of gravity distance | remark |
| I | 22.3 m ² boom-side | Xg1 = 12.3 m | Wind surface perpendicular to frontal wind |
| II | 22.3 m ² boom-side | Xg2 = 4.7 m | |
| I/II | 7.4 m ² | Ys = 0.6 m | Exposed area in frontal wind |
| III | 21.3 m ² | Ys = 5.6 m | |

| | | | | |
|-----------------------|-----|-------|--------|-----------|
| Absolute altitude [m] | 0~8 | 8~20 | 20~100 | Above 100 |
| W [N/m ²] | 800 | 1,280 | 1,760 | 2,080 |

| F = W × A | | |
|----------------|--------------------------------|-----------------------|
| F : wind force | W : lateral thrust due to wind | A : wind surface area |

Standard scope



| Technical specification | | Working diagram | |
|-------------------------|-------------|-----------------|--|
| Boom type | 5sec RZ | | |
| Horizontal reach | 41 m | | |
| Vertical reach | 42 m | | |
| Depth reach | 35.5 m | | |
| Boom Length /rotation | 1ST | 9.6M / 90° | |
| | 2ND | 7.3M / 180° | |
| | 3RD | 7.4M / 225° | |
| | 4TH | 8.4M / 180° | |
| | 5TH | 8.3M / 210° | |
| End hose length | 3.5 m | | |
| Delivery line | 125 mm(5") | | |
| Boom weight | 8,640 kg | | |
| Slewing system | Size(W×L×H) | 2300X2300X2700 | |
| | Weight | 3,920 kg | |
| Power | AC380V/60Hz | | |

Working diagram

